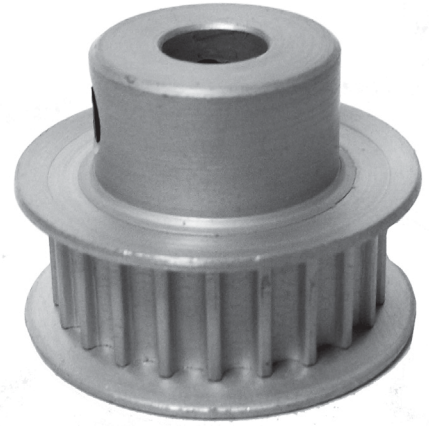


POWERHOUSE™ HTD® TIMING PULLEYS

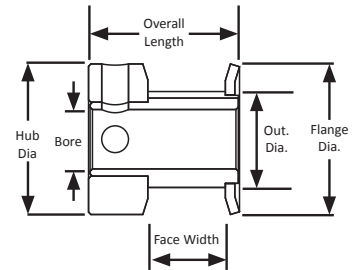
3 mm Pitch
For 6 mm Wide Belts
Hub and Flanges
Aluminum
Clear Anodized
Metric Finished Bore

METRIC TIMING PULLEY

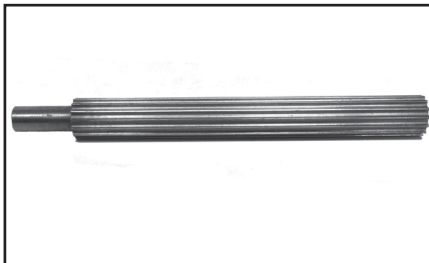
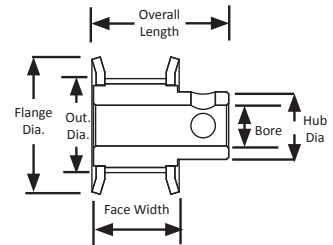


Part Number	No. of Teeth	Type	Pitch Dia. (mm)	Out. Dia. (mm)	Flange Dia. (mm)	Bore (mm)	Face Width (mm)	Overall Length (mm)	Hub Dia. (mm)	Set Screw
10-3M06M6CA3	10	6C	9.6	8.8	12.8	3.0	-	14.5	12.8	1 x M2
11-3M06M6CA3	11	6C	10.5	9.7	13.5	3.0	-	14.5	13.5	1 x M2
12-3M06M6CA4	12	6C	11.5	10.7	14.7	4.0	-	14.5	14.7	1 x M2
13-3M06M6CA4	13	6C	12.4	11.6	15.5	4.0	-	14.5	15.5	1 x M2
14-3M06M6CA6	14	6C	13.4	12.6	16.1	6.0	-	14.5	16.1	2 x M3 @ 90°
15-3M06M6CA6	15	6C	14.3	13.5	17.4	6.0	-	14.5	17.4	2 x M3 @ 90°
16-3M06M6CA6	16	6C	15.3	14.5	18.0	6.0	-	14.5	18.0	2 x M3 @ 90°
17-3M06M6CA6	17	6C	16.2	15.4	18.8	6.0	-	14.5	18.8	2 x M3 @ 90°
18-3M06M6FA6	18	6F	17.2	16.4	20.0	6.0	9.8	17.5	11.2	2 x M3 @ 90°
19-3M06M6FA6	19	6F	18.2	17.4	20.7	6.0	9.8	17.5	11.9	2 x M3 @ 90°
20-3M06M6FA6	20	6F	19.1	18.3	22.7	6.0	9.8	17.5	12.7	2 x M4 @ 90°
22-3M06M6FA6	22	6F	21.0	20.2	24.0	6.0	9.8	17.5	14.3	2 x M4 @ 90°
24-3M06M6FA6	24	6F	22.9	22.1	26.0	6.0	9.8	17.5	15.9	2 x M4 @ 90°
25-3M06M6FA6	25	6F	23.9	23.1	26.9	6.0	9.8	17.5	15.9	2 x M4 @ 90°
26-3M06M6FA6	26	6F	24.8	24.0	28.1	6.0	9.8	17.5	15.9	2 x M4 @ 90°
28-3M06M6FA6	28	6F	26.8	26.0	29.8	6.0	9.8	17.5	17.8	2 x M4 @ 90°
30-3M06M6FA6	30	6F	28.7	27.9	31.8	6.0	9.8	17.5	19.7	2 x M4 @ 90°
32-3M06M6FA6	32	6F	30.6	29.8	33.6	6.0	9.8	17.5	21.6	2 x M4 @ 90°
34-3M06M6FA6	34	6F	32.5	31.7	35.5	6.0	10.3	18.3	23.4	2 x M4 @ 90°
36-3M06M6FA6	36	6F	34.4	33.6	37.4	6.0	10.3	18.3	25.4	2 x M4 @ 90°
38-3M06M6FA6	38	6F	36.3	35.5	39.4	6.0	10.3	18.3	27.3	2 x M4 @ 90°
40-3M06M6FA6	40	6F	38.2	37.4	41.3	6.0	10.3	18.3	29.2	2 x M4 @ 90°
44-3M06M6FA6	44	6F	42.0	41.2	45.1	6.0	10.3	18.3	33.0	2 x M4 @ 90°

TYPE 6C



TYPE 6F



For 3 mm POWERHOUSE™ HTD® pitch pulley stock and flanges, see page 312.



For matching 3 mm POWERHOUSE™ HTD® pitch belts, see page 215.

Save time and money on labels by taking advantage of our custom eco-friendly marking options. Custom marking options are available with our ElectroX Laser Marking Machine, our Epilog Laser Marking Machine, and our Telesis Pin Stamp Marking Machine.